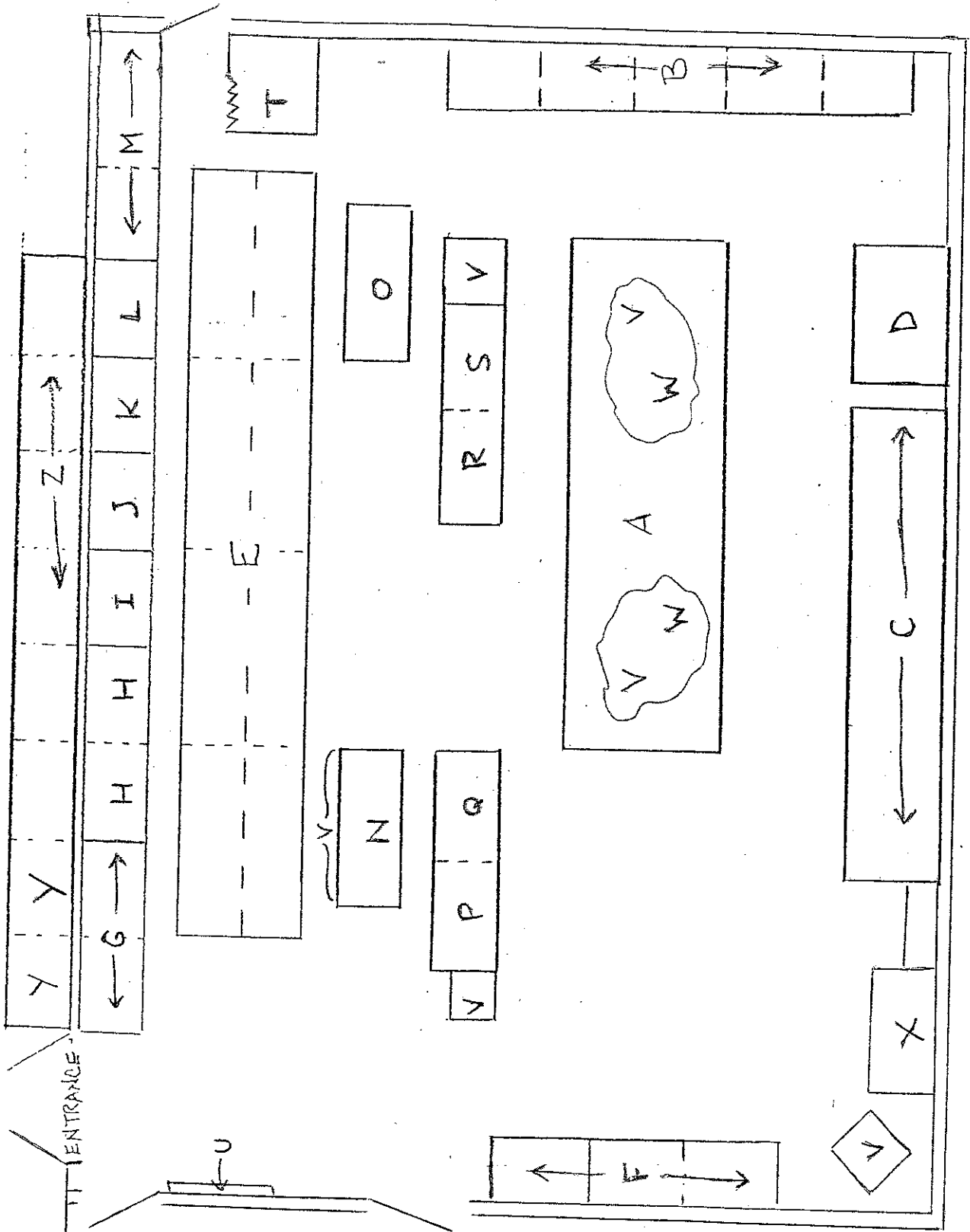


Map of the Museum

Each display has a code letter corresponding to the subject matter information which follows.



Key to Map of Displays in Museum of Geosciences

as of April 2008

- A. *Allosaurus Fragilis* model
- B. Fossils of Virginia
- C. Volcanoes of Virginia
- D. Textures of rocks – orbicular granite, migmatite, pegmatite
- E. Systematic Minerals (Dana Classification)
- F. Minerals of Virginia
- G. Michael collections: large display samples
- H. Rotating exhibits, esp. from gem and mineral shows
- I. Elmwood Mine samples
- J. Gemstones
- K. Mineral Habits
- L. Miller Agate Cabochon collection
- M. Jane Hearn collection
- N. Quartz – SiO₂
- O. Ornaments
- P. Minerals from Australia
- Q. Minerals from Mexico
- R. Minerals from Tsumeb, SW Africa
- S. Minerals from Minas Gerais, Brazil
- T. Fluorescent Minerals exhibit
- U. Dinosaur footprints from Virginia
- V. Large rock and mineral display pieces: feldspar, calcite, native copper, slate, mudcracks
- W. Large fossil display pieces: tree trunk, plant frond, mammoth scapula, coral, petrified wood
- X. ERC Kit Station for pickup/drop off
- Y. Weather, Earthquakes (hall display)
- Z. Rotating hall displays